

Operation Manual

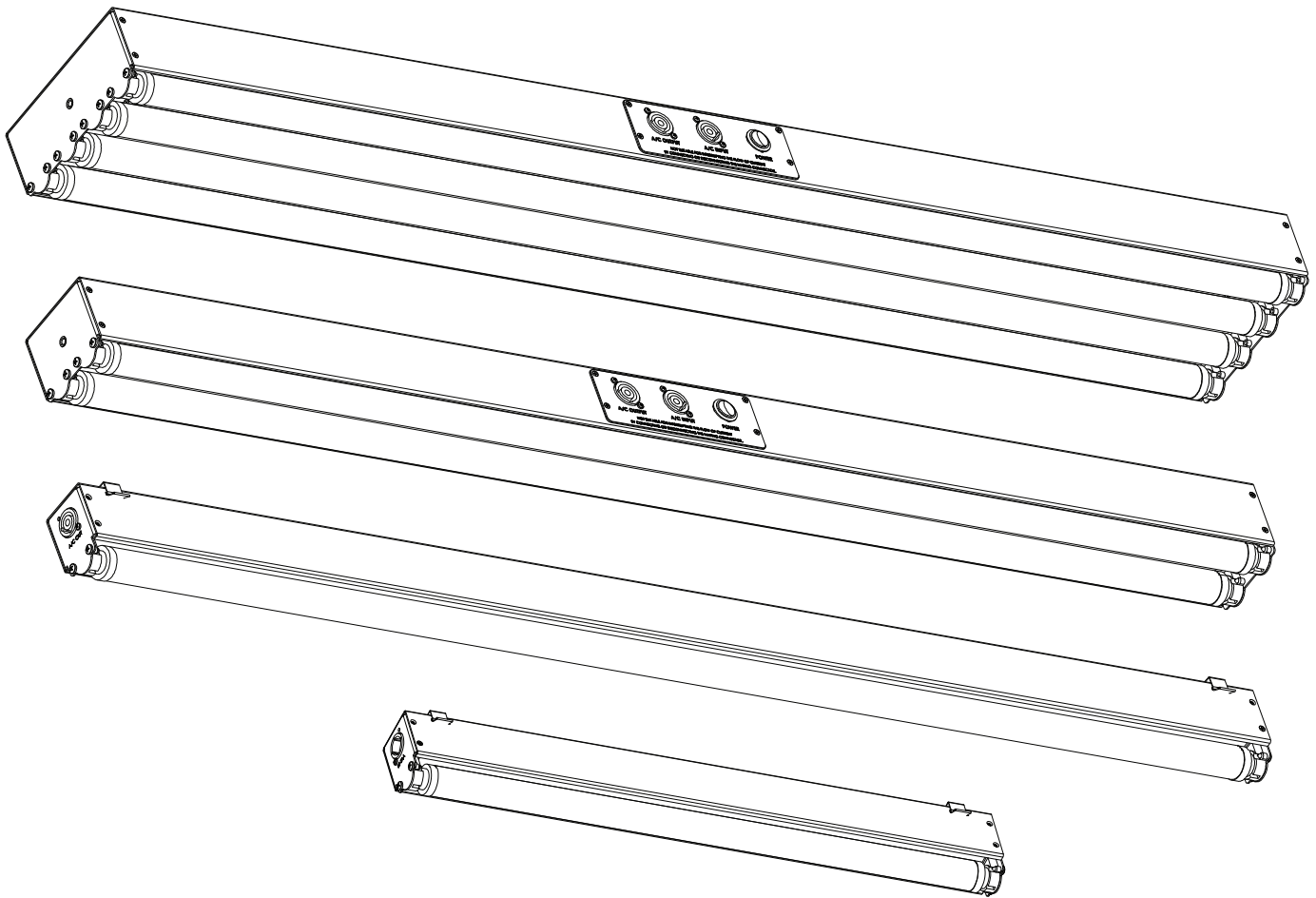
Ultraviolet LED Lighting Fixtures

UB-44

UB-42

UB-41

UB-21



ULTRABLADE[®]
BY WILDFIRE[®]

Table of Contents

Introduction	3
Safety Information	3
Specifications	4
Setup and Operation	5
Unpacking	5
Optional Accessories	5
Setup	5
Maintenance & Troubleshooting	6
Lamp Replacement	6
Cleaning	6
Troubleshooting	6
Diagrams	7
Isometric & Line Views UB-44	7
Isometric & Line Views UB-42	8
Isometric & Line Views UB-41	9
Isometric & Line Views UB-21	10
Exploded View & Part List UB-44-1	11
Exploded View & Part List UB-44-2	12
Exploded View & Part List UB-42-1	13
Exploded View & Part List UB-42-2	14
Exploded View & Part List UB-41-1	15
Exploded View & Part List UB-41-2	16
Exploded View & Part List UB-21-1	17
Exploded View & Part List UB-21-2	18
Schematic UB-44-1	19
Schematic UB-44-2	20
Schematic UB-42-1 & UB-42-2	21
Schematic UB-41-1 & UB-41-2	22
Schematic UB-21-1 & UB-21-2	23
Spectral Output Graph	24
Photometrics Chart	24
Limited Warranty	25

Introduction

Congratulations on your purchase of an UltraBlade LED lighting series fixture by Wildfire. These powerful and versatile ultraviolet LED lighting fixtures feature Wildfire's SableLED UV LED tube lamps. Each UltraBlade LED fixture is precision engineered to provide you with years of trouble-free service. Please take a moment to read this manual thoroughly before attempting to operate this fixture improper set-up, use or servicing may cause damage to the fixture and/or lamps and void the warranty.

Safety Information

DANGER – RISK OF ELECTRIC SHOCK OR FIRE - USE ONLY WILDFIRE SABLELED LED TUBE LAMPS MODEL L30T9/BLB (4') AND L15T9/BLB (2'). DO NOT INSTALL FLUORESCENT LAMPS IN THIS FIXTURE.

WARNING - THIS FIXTURE EMITS ULTRAVIOLET RADIATION (UV) AT A PRIMARY WAVELENGTH OF 365NM, AVOID EYE AND SKIN EXPOSURE AT DISTANCES SHORTER THAN 3.3' (1m). DO NOT LOOK INTO THE LAMPS DIRECTLY AT DISTANCES SHORTER THAN 11' (3.3m) OR VIEW THE LAMPS DIRECTLY WITH OPTICAL INSTRUMENTS THAT MAY CONCENTRATE THE LIGHT/RADIATION OUTPUT.

CAUTION – WHEN USED IN ACCORDANCE WITH THE MANUFACTURERS OPERATING INSTRUCTIONS, NO HAZARDS EXIST TO MOST PEOPLE AT DISTANCES GREATER THAN 11' (3.3m) FROM THE FIXTURE. HOWEVER, INDIVIDUALS SUFFERING FROM A RANGE OF SUNLIGHT EXPOSURE DISORDERS, APHAKIC AND PSEUDOAPHIKIC, OR THOSE INDIVIDUALS RECEIVING PHOTSENSITIVE MEDICATION MAY RECEIVE DISCOMFORT IF EXPOSED TO ULTRAVIOLET LIGHT.

CAUTION – NOT FOR RESIDENTIAL USE. DRY INDOOR LOCATIONS ONLY. SUITABLE FOR SURFACE MOUNTING ONLY.

Designed, Engineered and Built in the USA

Specifications

Housing:

18 Ga. aluminum with stainless steel hardware

Finish:

Flat black powder coat

Mounting:

Keyhole slot or Spring mounting brackets

Sockets:

Positive locking medium Bi-Pin G13

Input Voltage:

100-240VAC

Input Current:

UB-21: 0.15A Max

UB-41: 0.18A Max

UB-42: 0.83A Max

UB-44: 1.66A Max

Frequency:

50-60Hz

Power Factor:

0.83

Power Consumption:

UB-21: 9W

UB-41: 15W

UB-42: 30W

UB-44: 60W

Operating Temperature:

-4° F to 13° F (-20° F to 45° C)

Humidity:

0-80% non-condensing

Power Cord:

6' 16/3 SOW with PowerCON and male Edison (PowerCON Models Only)

Power Input Connections

Neutrik PowerCON (PowerCON Models Only)

Power Output Connection:

Neutrik PowerCON, Max 4.0A (PowerCON Models Only)

Lamps:

UB-21: One Wildfire SableLED L9T8/BLB UV LED Tube Lamp

UB-41: One Wildfire SableLED L15T8/BLB UV LED Tube Lamp

UB-42: Two Wildfire SableLED L15T8/BLB UV LED Tube Lamps

UB-44: Four Wildfire SableLED L15T8/BLB UV LED Tube Lamps

Peak Wavelength:

365nm

Beam Angle:

120°

Lamp Life:

40,000 Hrs.

Dimensions:

UB-21: 3.12"/7.92cm High x 2.00"/5.08cm Wide x 24.37"/61.90cm Long

UB-41: 3.12"/7.92cm High x 2.00"/5.08cm Wide x 48.37"/122.86cm Long

UB-42: 3.12"/7.92cm High x 3.50"/8.89cm Wide x 48.37"/122.86cm Long

UB-44: 3.12"/7.92cm High x 6.82"/17.32cm Wide x 48.37"/122.863cm Long

Weight:

UB-21: 1.80 lbs./.81kg.

UB-41: 3.20 lbs./1.45kg.

UB-42: 4.40 lbs./1.99kg.

UB-44: 8.80lbs./3.99kg.

IP Rating:

IP-20 Indoor use

Warranty:

Three Year Parts and Labor

Standard Equipment:

Wildfire SableLED UV LED Tube Lamps, Spring Mounting Clips, PowerCON Power Out Cable Connector

Optional Accessories:

147-021 Truss Clamp (All Models)

147-002 Safety Cable (All Models)

147-041 Floor Stand Kit (UB-42 & UB-44)

147-040 Adjustable L Bracket Kit (UB-42 & UB-44)

147-003 T-Bar Ceiling Mount (All Models)

Setup & Operation

Unpacking

Unpack the fixture and carefully inspect it for any signs of physical damage. Report any damage to Wildfire or your local distributor immediately

Optional Accessories:

Truss Clamp – These clamps when attached to both of the optional adjustable mounting brackets allows you to mount the fixture to a standard 2" pipe truss. Contact Wildfire or your local distributor for pricing.

Safety Cable- This cable is to be used when installing the fixture on a pipe truss with the optional Adjustable L Brackets and Truss Clamps. It attaches to the Adjustable L Brackets on either side of the UltraBlade model UB-42 fixture securing it from falling if the clamps are not tightened properly. Contact Wildfire or your local distributor for pricing.

Floor Stand Kit- This aluminum stand set attaches to the optional Adjustable L Bracket Kit enabling you to mount the UltraBlade models UB-42 & UB-44 fixtures on the floor for footlight applications. Contact Wildfire or your local distributor for pricing.

Adjustable L Bracket Kit- These brackets enable you to mount the UltraBlade models UB-42 & UB-44 fixtures to a flat surface or truss system using the optional Truss Clamps and then adjust the fixture to the desired angle. Contact Wildfire or your local distributor for pricing.

T-Bar Ceiling Mount- These brackets enable you to mount the UltraBlade models UB-42 & UB-44 fixtures to the T-bars on a standard drop ceiling. Contact Wildfire or your local distributor for pricing

Setup

Connect the blue PowerCON cable connector on the power cord to the blue PowerCON AC Input panel connector on the fixture. The fixture is also supplied with a gray PowerCON cable connector, enabling you to interconnect additional fixtures. **Do not connect more than 4.0A Max to the PowerCON AC Output connector**

Plug the fixture into the appropriate properly grounded power source. If you are controlling the unit with a lighting control board you will need to make sure it is plugged into a non-dim circuit. **Do not at any time plug the fixture into a dimmable circuit, doing so will damage the LED lamps in the fixture and void the warranty.**

Operation

To turn the fixture on switch the rocker switch on the side of fixture to the ON position. Unplug the fixture from the AC power outlet during prolonged periods of non-operation.

Maintenance & Troubleshooting

LED Lamp Replacement

Turn the power switch to the off position and unplug the fixture. If this is not possible then steps should be taken that would allow the fixture to remain in an off state while re-lamping. Holding the lamp firmly with two hands, one hand near each end of the lamp, rotate the lamp about its long center-line axis, one quarter (1/4) turn either clockwise or counter-clockwise. The sockets will click, and the lamp will become loose. Lift the lamp free of the sockets. Install the new lamp by lining up the two pins on the ends of the lamp so that they will slide into the open slot in the lamp holder. Set the lamp into the sockets until the lamp pins rest on the lamp socket. Turn the lamp one-quarter (1/4) turn either clockwise or counter-clockwise, until the lamp socket makes a small click, or you feel a detent position. Gently lift up on the lamp to make sure that both ends of the lamp are installed correctly, neither end of the lamp should move in the socket.

Cleaning

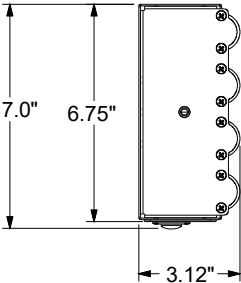
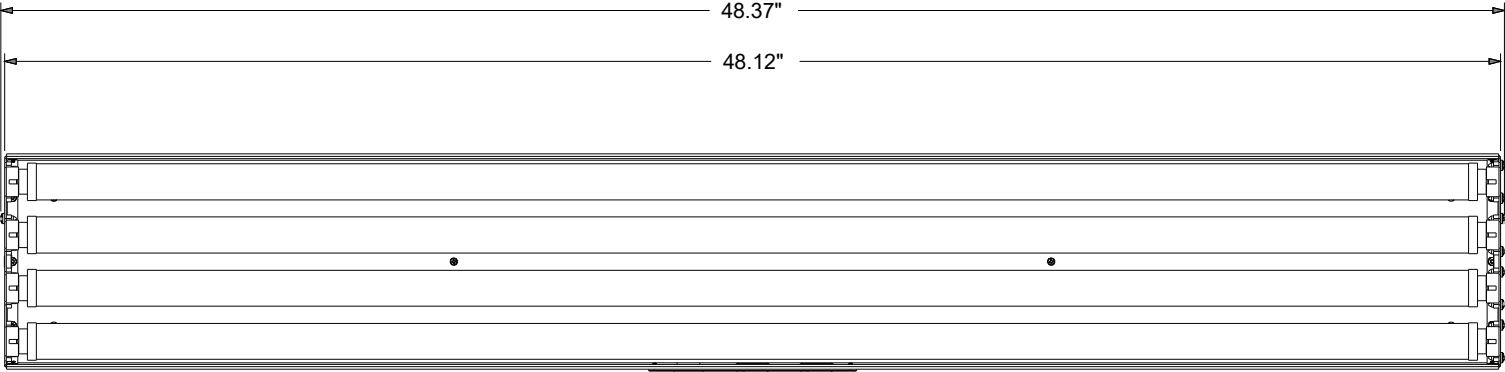
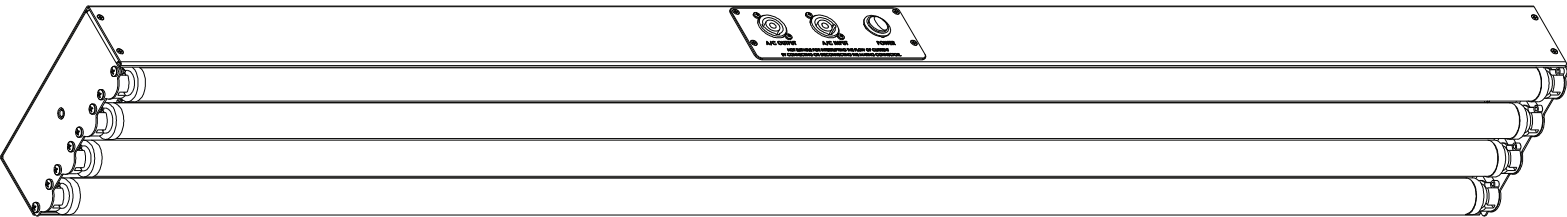
At no time should any cleaning chemicals or abrasives be used to clean any part of the fixture. Always unplug the fixture before cleaning. For normal cleaning, a dry soft cloth should be used to wipe any surface free from dust and light dirt. If the fixture is heavily soiled, lightly dampen the cloth with a mild window cleaning agent and wipe. Lamps should be cleaned using the same method; first use a dry soft cloth and then proceed with a window-cleaning agent if lamp is too heavily soiled. Do not spray or apply any liquid directly to any part of the fixture.

Troubleshooting

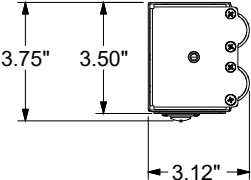
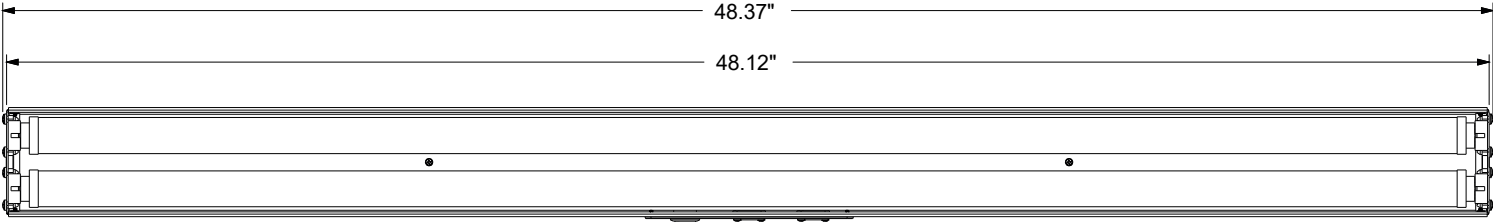
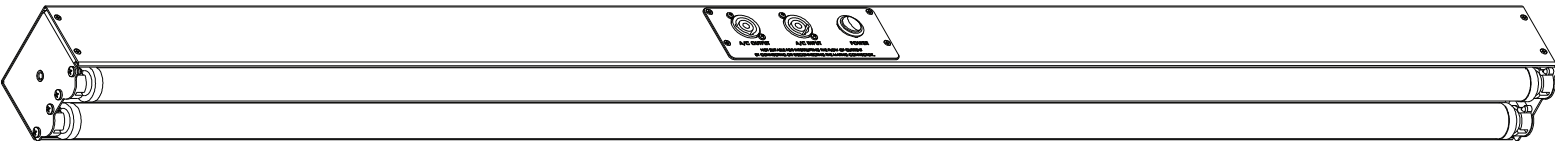
Other than the lamps, there are no user serviceable parts in the fixture.

Diagrams

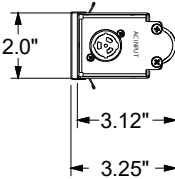
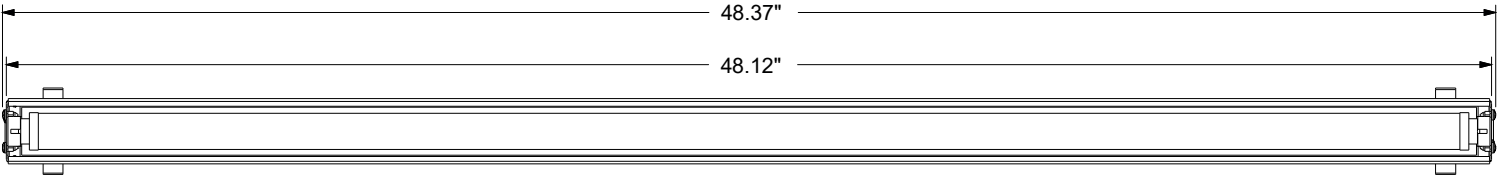
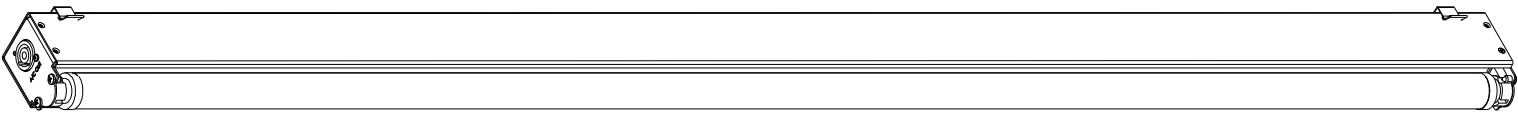
Isometric & Line Views UB-44



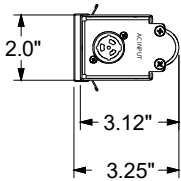
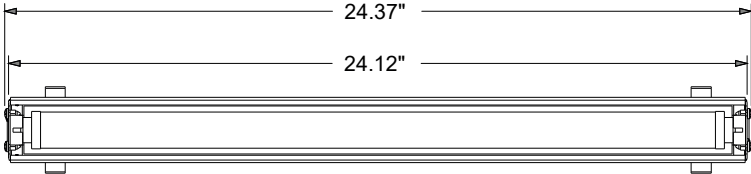
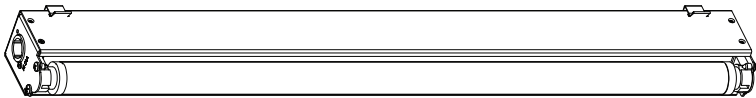
Isometric & Line Views UB-42



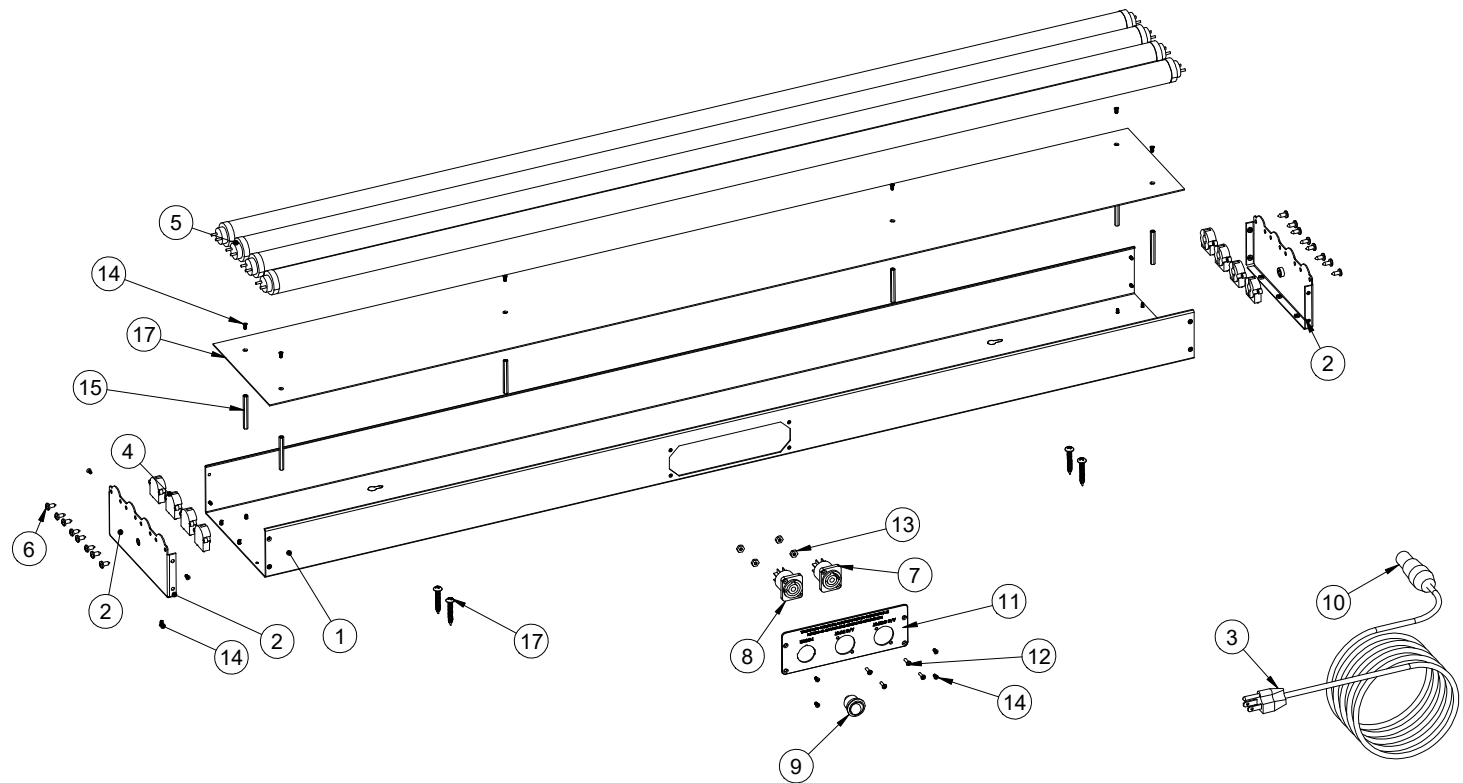
Isometric & Line Views UB-41



Isometric & Line Views UB-21

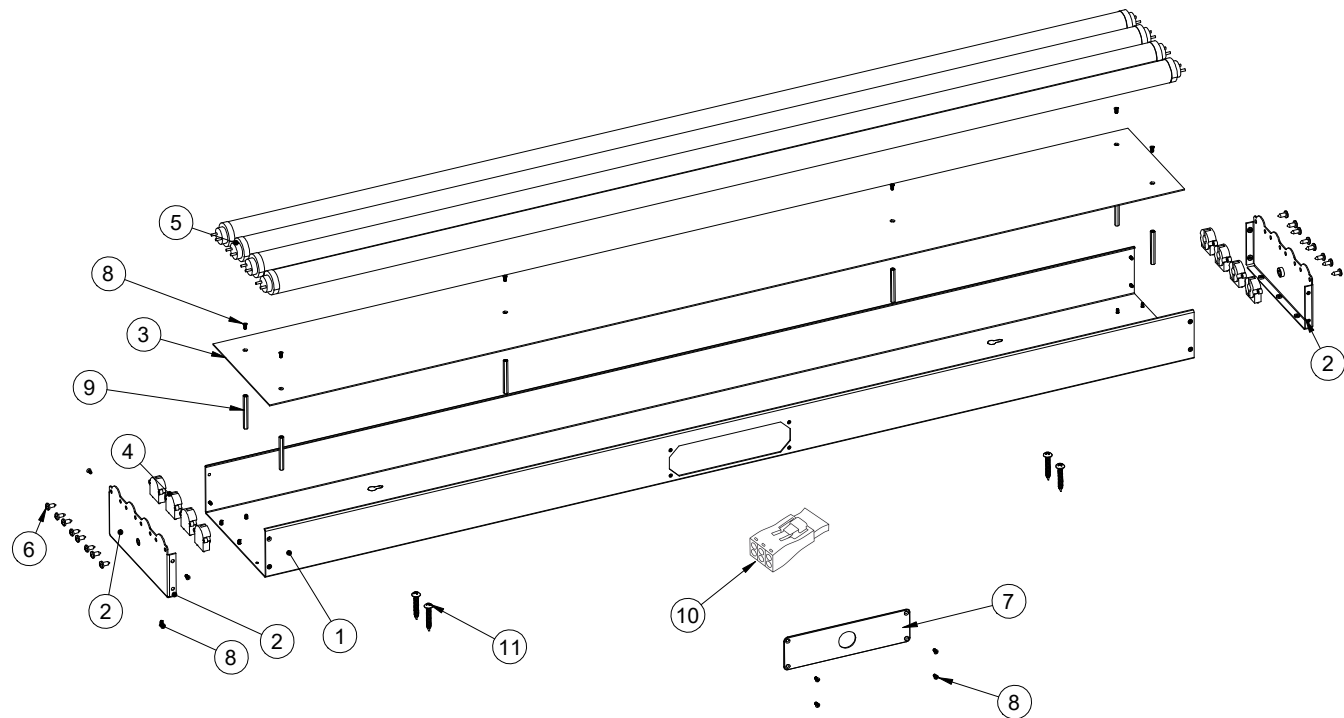


Exploded View & Part List UB-44-1



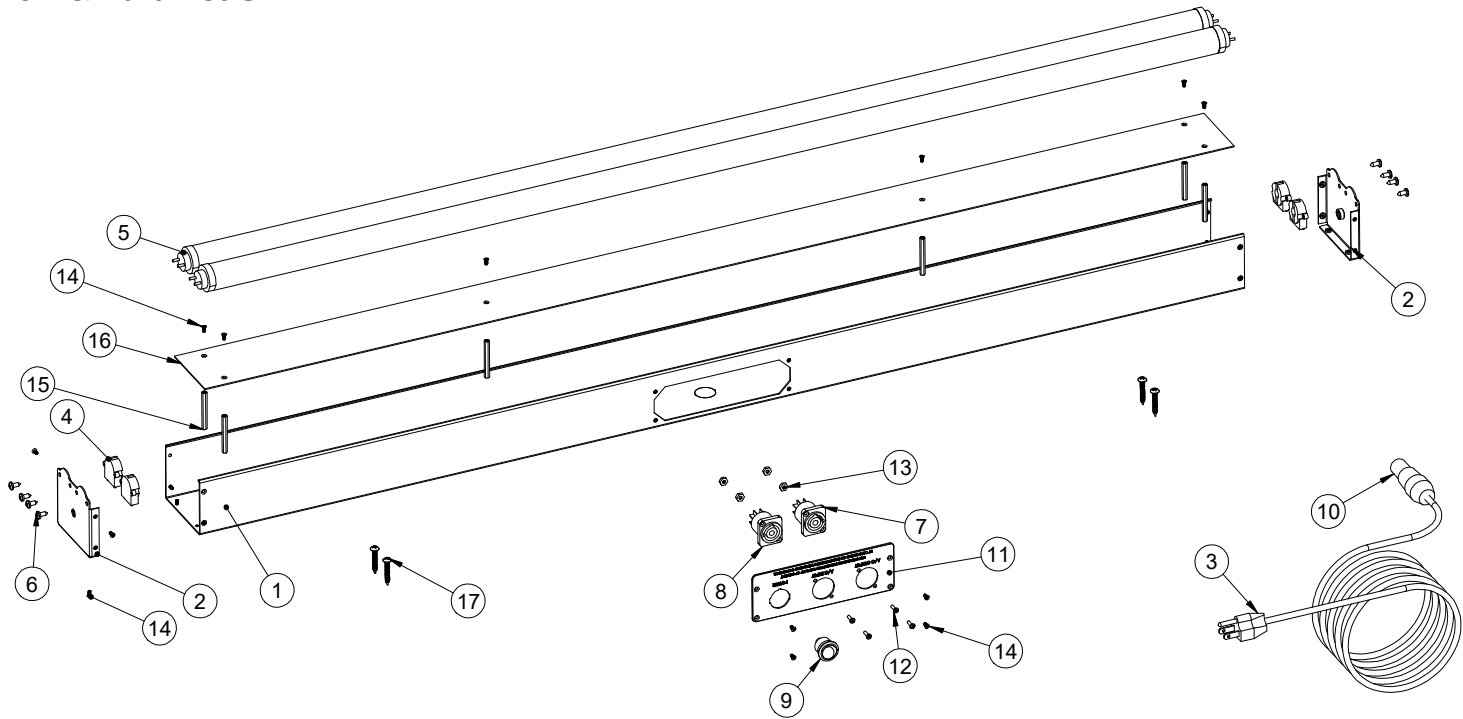
#	QTY.	PART #	PART NAME	#	QTY.	PART#	PART NAME
1	1	104-129-03	Housing UB-44	10	1	106-050	Connector, Cable, PowerCON, Power Input
2	2	104-138-01	Housing End, UB-44	11	1	104-135-02	Housing Plate, UB-42 & 44 PowerCON
3	1	107-003	Cord, Power, 16 AWG, 9	12	4	121-003	Screw, M, PHL, PH, 4-40 x 3/8" 18-8 SS
4	8	108-004	Socket, Lamp, G13 Base	13	4	121-033	Kepnut, 4-40, 18-8 SS
5	4	142-004	Lamp, LED, SableLED, T8, 365nm, 48" 15W	14	30	121-095	Screw, M, PHL, 4-40 x 1/4", 100°, 18-8 SS
6	16	121-017	Screw, SM, PHL, PH, #8 x 3/8", 18-8 SS	15	6	121-076	Standoff, 3/16" Hex, F-F, 4-40 x 1 3/4"
7	1	106-053	Connector, Panel, PowerCON, Power Output	16	1	104-145-01	Cover Wiring, UB-44
8	1	106-051	Connector, Panel, PowerCON, Power Input	17	4	121-025	Screw, SM, PHL, PH #8 x 1", 18-8SS
9	1	105-020	Switch, DPST, 15A				

Exploded View & Part List UB-44-2



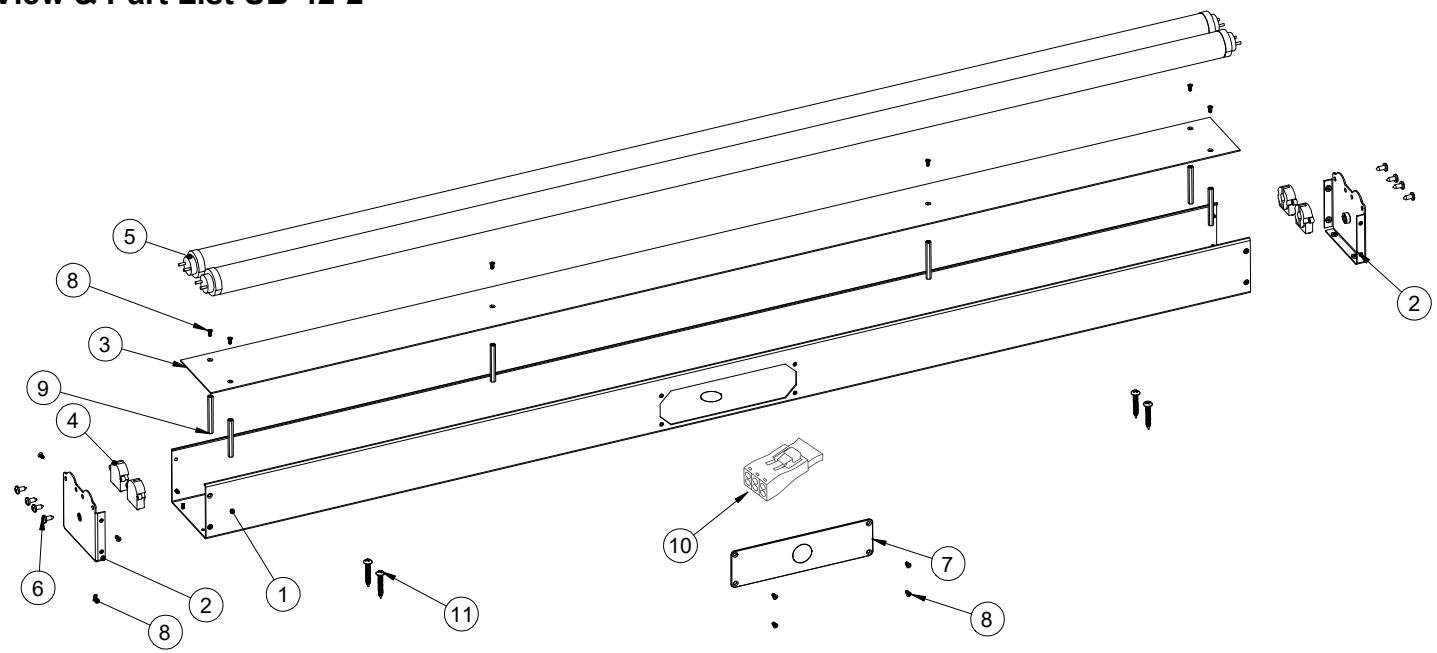
#	QTY.	PART #	PART NAME	#	QTY.	PART#	PART NAME
1	1	104-129-03	Housing UB-44	7	1	104-137-02	Housing Plate, UB-42 & 44, Hardwire
2	2	104-138-01	Housing End, UB-44	8	30	121-095	Screw, M, PHL, 4-40 x 1/4", 100°, 18-8 SS
3	1	104-145-01	Cover Wiring, UB-44	9	6	121-076	Standoff, 3/16" Hex, F-F, 4-40 x 1 3/4"
4	8	108-004	Socket, Lamp, G13 Base	10	1	106-087	Connector, Luminaire Disconnect
5	4	142-004	Lamp, LED, SableLED, T8, 365nm, 48" 15W	11	4	121-025	Screw, SM, PHL, PH #8 x 1", 18-8SS
6	16	121-017	Screw, SM, PHL, PH, #8 x 3/8", 18-8 SS				

Exploded View & Part List UB-42-1



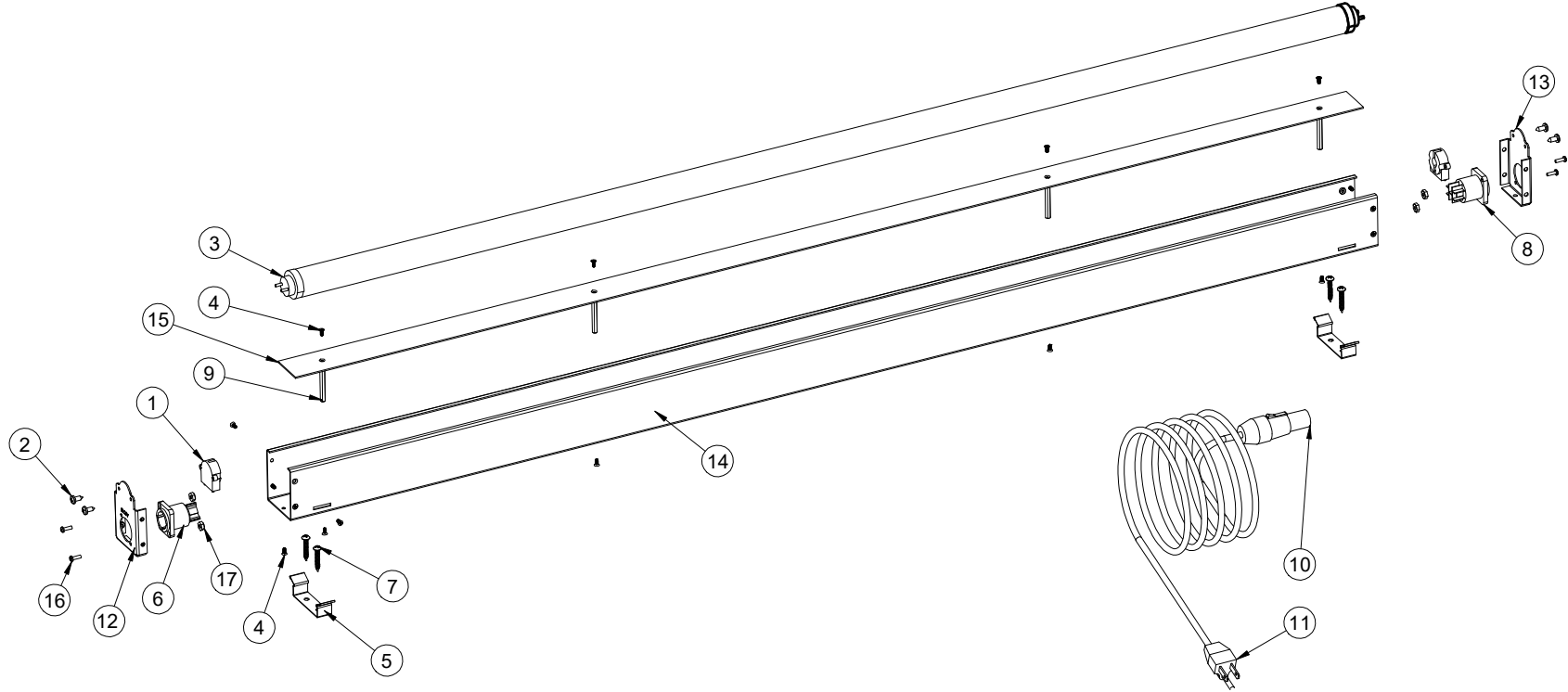
#	QTY.	PART #	PART NAME	#	QTY.	PART#	PART NAME
1	1	104-127-03	Housing UB-42	10	1	106-050	Connector, Cable, PowerCON, Power Input
2	2	104-132-02	Housing End, UB-42	11	1	104-135-02	Housing Plate, UB-42 & 44 PowerCON 1
3	1	107-003	Cord, Power, 16 AWG, 9'	12	4	121-003	Screw, M, PHL, PH, 4-40 x 3/8" 18-8 SS
4	4	108-004	Socket, Lamp, G13 Base	13	4	121-033	Kepnut, 4-40, 18-8 SS
5	2	142-004	Lamp, LED, SableLED, T8, 365nm, 48" 15W	14	28	121-095	Screw, M, PHL, 4-40 x 1/4", 100°, 18-8 SS
6	8	121-017	Screw, SM, PHL, PH, #8 x 3/8", 18-8 SS	15	6	121-076	Standoff, 3/16" Hex, F-F, 4-40 x 1 3/4"
7	1	106-053	Connector, Panel, PowerCON, Power Output	16	1	104-143-02	Cover Wiring, UB-42
8	1	106-051	Connector, Panel, PowerCON, Power Input	17	4	121-025	Screw, SM, PHL, PH #8 x 1", 18-8SS
9	1	105-020	Switch, DPST, 15A				

Exploded View & Part List UB-42-2



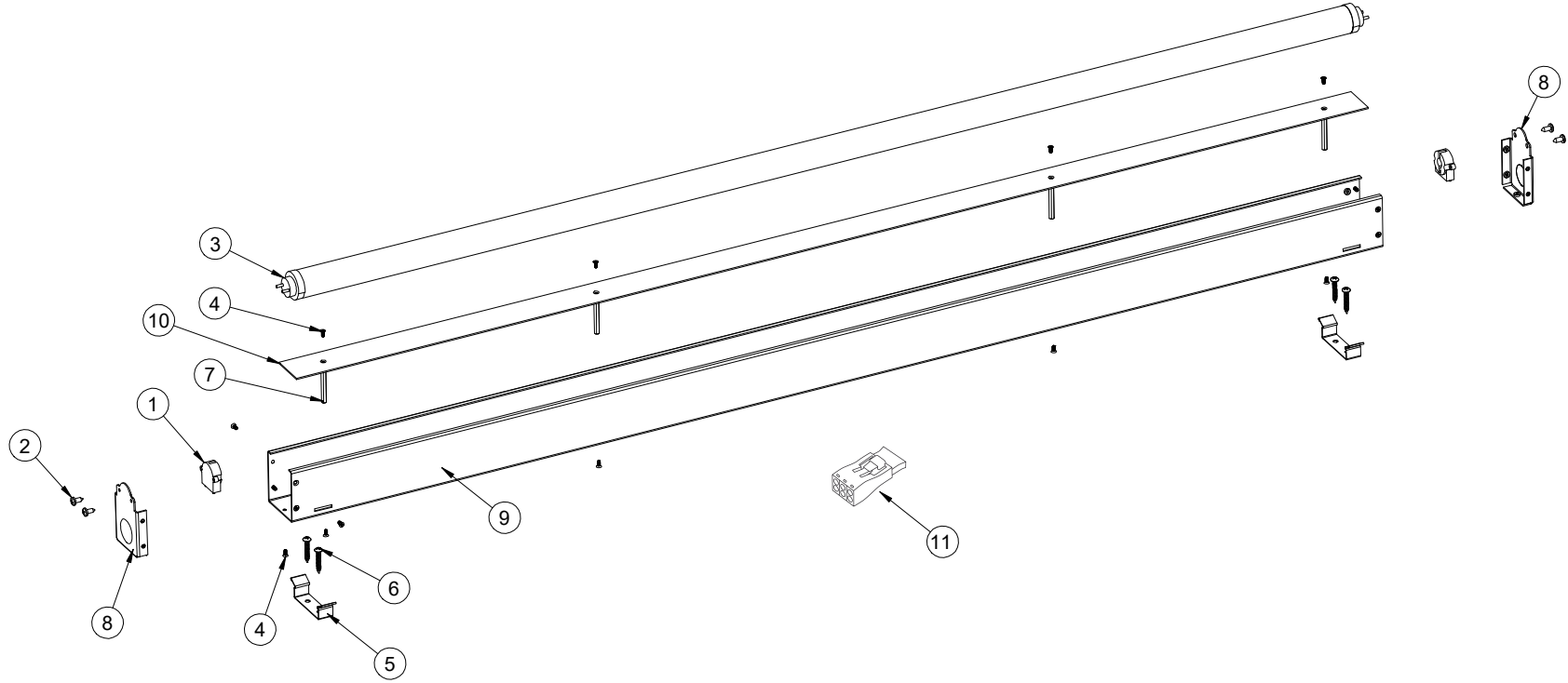
#	QTY.	PART #	PART NAME	#	QTY.	PART#	PART NAME
1	1	104-127-03	Housing UB-42	7	1	104-137-02	Housing Plate, UB-42 & 44 Hardwire
2	2	104-132-02	Housing End, UB-42	8	28	121-095	Screw, M, PHL, 4-40 x 1/4", 100°, 18-8 SS
3	1	104-143-02	Cover, Wiring, UB-42	9	6	121-076	Standoff, 3/16" Hex, F-F, 4-40 x 1 3/4"
4	4	108-004	Socket, Lamp, G13 Base	10	1	106-087	Connector, Luminaire Disconnect
5	2	142-004	Lamp, LED, SableLED, T8, 365nm, 48" 15W	11	4	121-025	Screw, SM, PHL, PH #8 x 1", 18-8SS
6	8	121-017	Screw, SM, PHL, PH, #8 x 3/8", 18-8 SS	12			

Exploded View & Part List UB-41-1



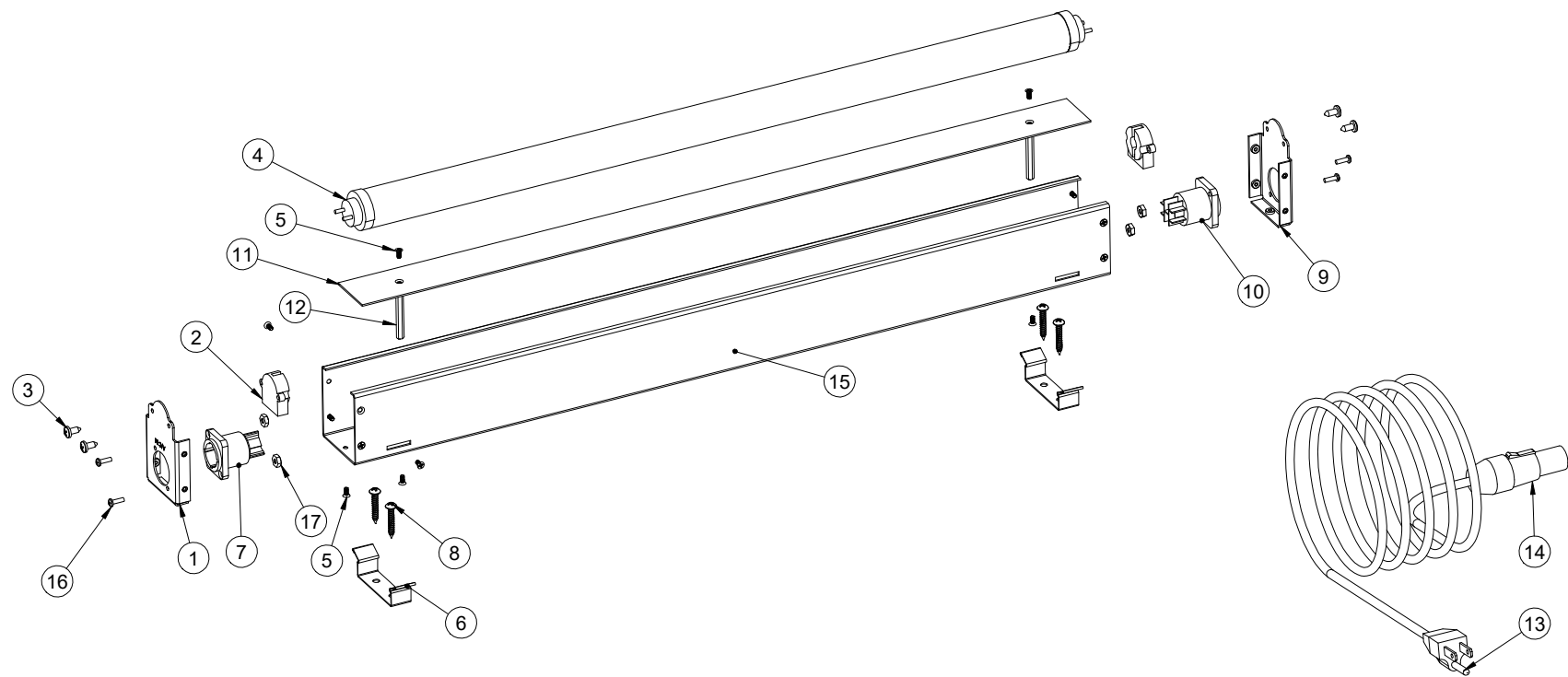
#	QTY.	PART #	PART NAME	#	QTY.	PART#	PART NAME
1	2	108-004	Socket Lamp G13 Base	10	1	106-050	Connector, Cable, PowerCON, Power Input
2	4	121-017	Screw, SM, PHL, PH, #8 x 3/8" 18-8 SS	11	1	107-003	Cord, Power, 16 AWG, 9'
3	1	142-004	Lamp, LED, SableLED, T8, 365nm, 48", 15W	12	1	104-130-02	Housing End, UB-21 & UB-41, Input
4	18	121-095	Screw, M, PHL, 4-40 x 1/4", 100°, 18-8SS	13	1	104-131-03	Housing End, UB-21 & 41, Output
5	2	104-008-02	Bracket, Mounting, UB-21 & UB-41	14	1	104-126-03	Housing, UB-41
6	1	106-051	Connector, Panel, PowerCON 1, Input	15	1	104-142-02	Cover, Wiring, UB-41
7	4	121-025	Screw, SM, PHL, PH #8 x 1", 18-8SS	16	4	121-003	Screw, M, PHL, PH, 4-40 x 3/8" 18-8 SS
8	1	106-053	Connector, Panel, PowerCON, Power Output	17	4	121-033	Kepnut, 4-40, 18-8 SS
9	4	121-076	Standoff, 3/16" Hex, F-F, 4-40 x 1 3/4"				

Exploded View & Part List UB-41-2



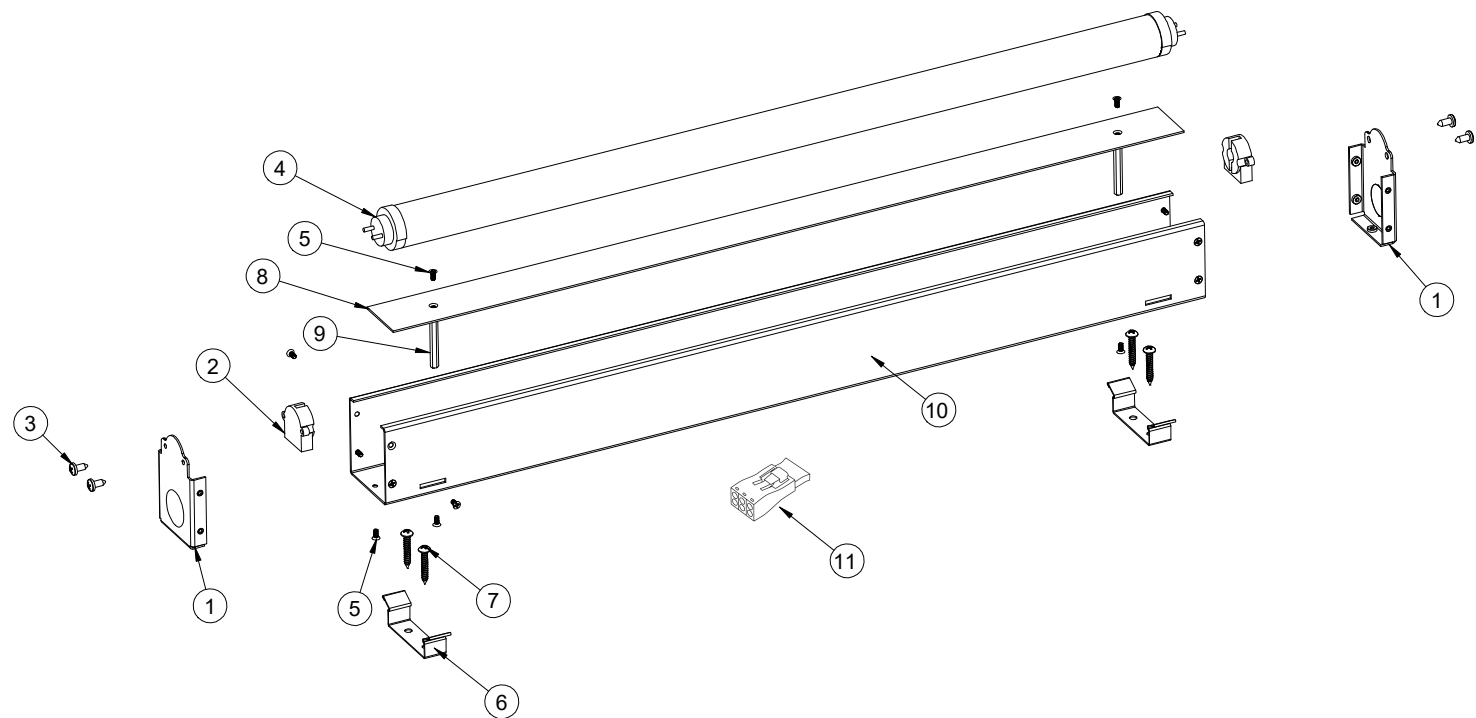
#	QTY.	PART #	PART NAME	#	QTY.	PART#	PART NAME
1	2	108-004	Socket Lamp G13 Base	7	4	121-076	Standoff, 3/16" Hex, F-F, 4-40 x 1 3/4"
2	4	121-017	Screw, SM, PHL, PH, #8 x 3/8" 18-8 SS	8	2	104-134-01	Housing End, UB-21 & UB-41, Hardwire
3	1	142-004	Lamp, LED, SableLED, T8, 365nm, 48", 15W	9	1	104-126-03	Housing, UB-41
4	18	121-095	Screw, M, PHL, 4-40 x 1/4", 100°, 18-8SS	10	1	104-142-02	Cover, Wiring, UB-41
5	2	104-008-02	Bracket, Mounting, UB-21 & UB-41	11	1	106-087	Connector, Luminaire Disconnect
6	4	121-025	Screw, SM, PHL, PH #8 x 1", 18-8SS				

Exploded View & Part List UB-21-1



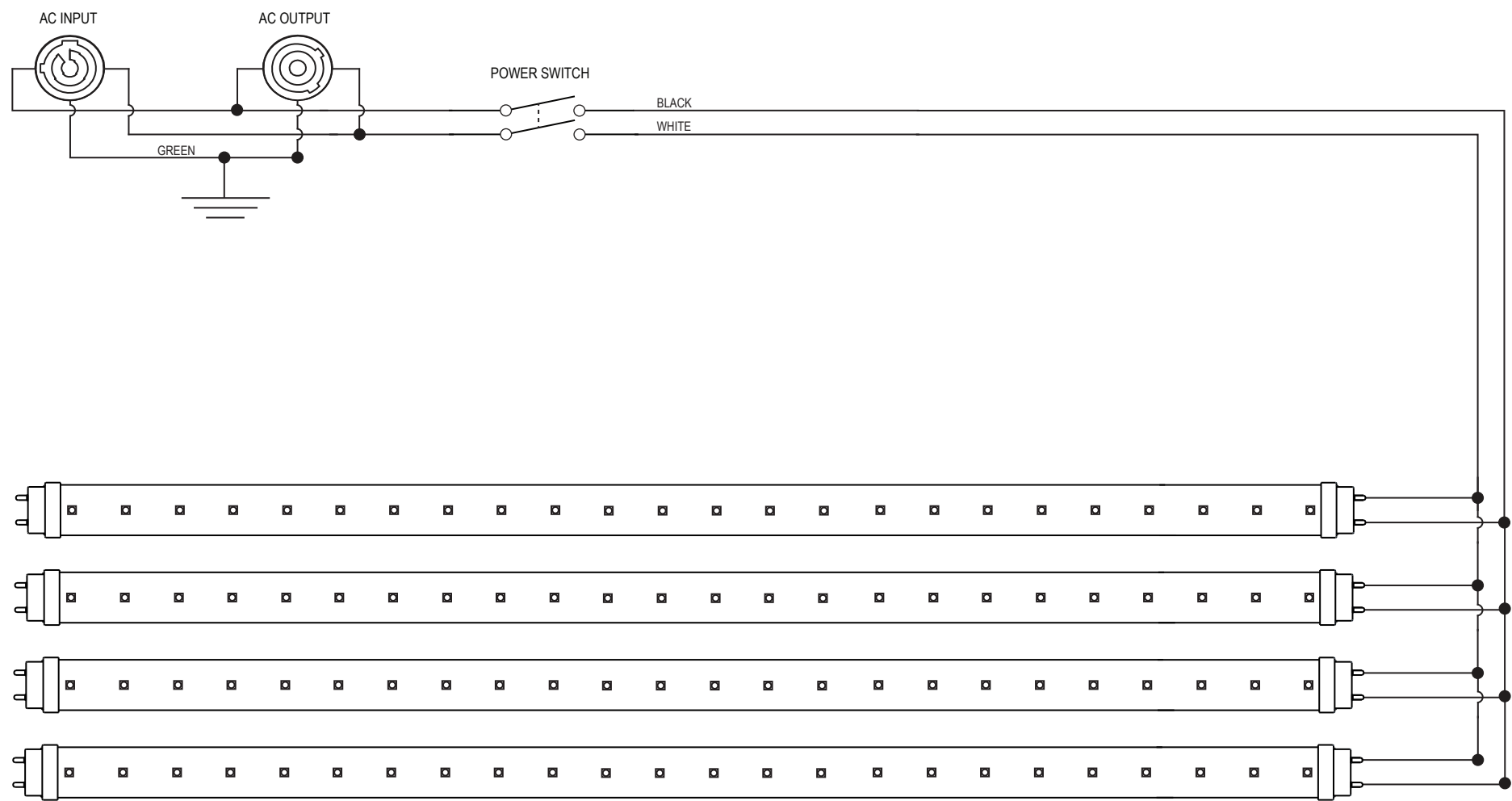
#	QTY.	PART #	PART NAME	#	QTY.	PART#	PART NAME
1	1	104-130-02	Housing End, UB-21 & UB-41, Input	10	1	106-053	Connector, Panel, PowerCON, Power Output
2	2	108-004	Socket Lamp G13 Base	11	1	104-140-02	Cover, Wiring, UB-21
3	4	121-017	Screw, SM, PHL, PH, #8 x 3/8" 18-8 SS	12	2	121-076	Standoff, 3/16" Hex, F-F, 4-40 x 1 3/4"
4	1	142-001	Lamp, LED, SableLED, T9, 365nm, 24", 15W	13	1	107-003	Cord, Power, 16 AWG, 9'
5	14	121-095	Screw, M, PHL, 4-40 x 1/4", 100°, 18-8SS	14	1	106-050	Connector, Cable, PowerCON, Power Input
6	2	104-008-02	Bracket, Mounting, UB-21 & UB-41	15	1	104-124-03	Housing, UB-21
7	1	106-051	Connector, Panel, PowerCON, Power Input	16	4	121-003	Screw, M, PHL, PH, 4-40 x 3/8" 18-8 SS
8	4	121-025	Screw, SM, PHL, PH #8 x 1", 18-8SS	17	4	121-033	Keplut, 4-40, 18-8 SS
9	1	104-131-03	Housing End, UB-21 & 41, Output				

Exploded View & Part List UB-21-2

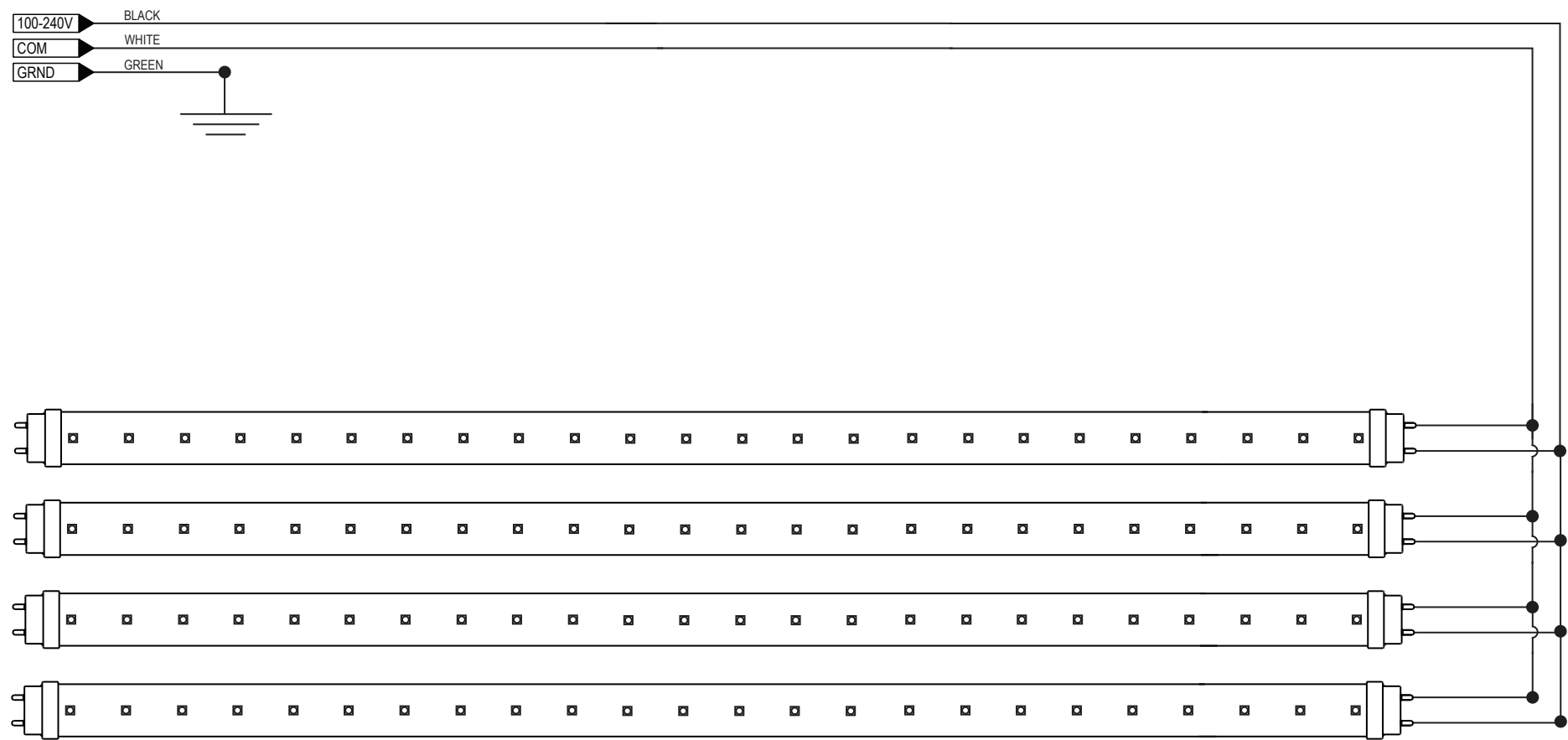


#	QTY.	PART #	PART NAME	#	QTY.	PART#	PART NAME
1	2	104-134-01	Housing End, UB-21 & UB-41, Hardwire	7	4	121-025	Screw, SM, PHL, PH #8 x 1", 18-8SS
2	2	108-004	Socket Lamp G13 Base	8	1	104-140-02	Cover, Wiring, UB-21
3	4	121-017	Screw, SM, PHL, PH, #8 x 3/8" 18-8 SS	9	2	121-076	Standoff, 3/16" Hex, F-F, 4-40 x 1 3/4"
4	1	142-003	Lamp, LED, SableLED, T8, 365nm, 24", 9W	10	1	104-124-03	Housing, UB-21
5	14	121-095	Screw, M, PHL, 4-40 x 1/4", 100°, 18-8SS	11	1	106-087	Connector, Luminaire, Disconnect
6	2	104-008-02	Bracket, Mounting, UB-21 & UB-41				

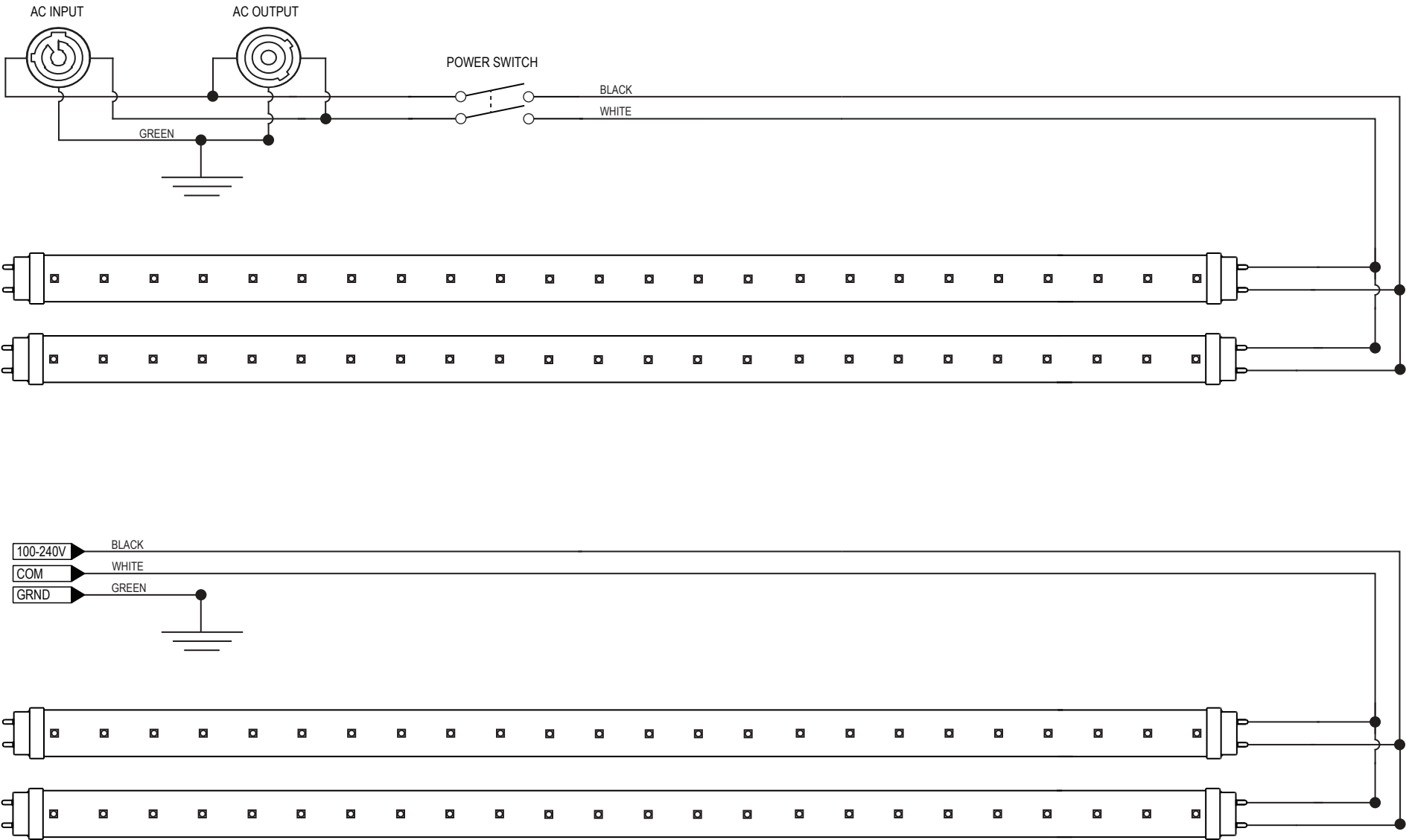
Schematic, UB-44-1



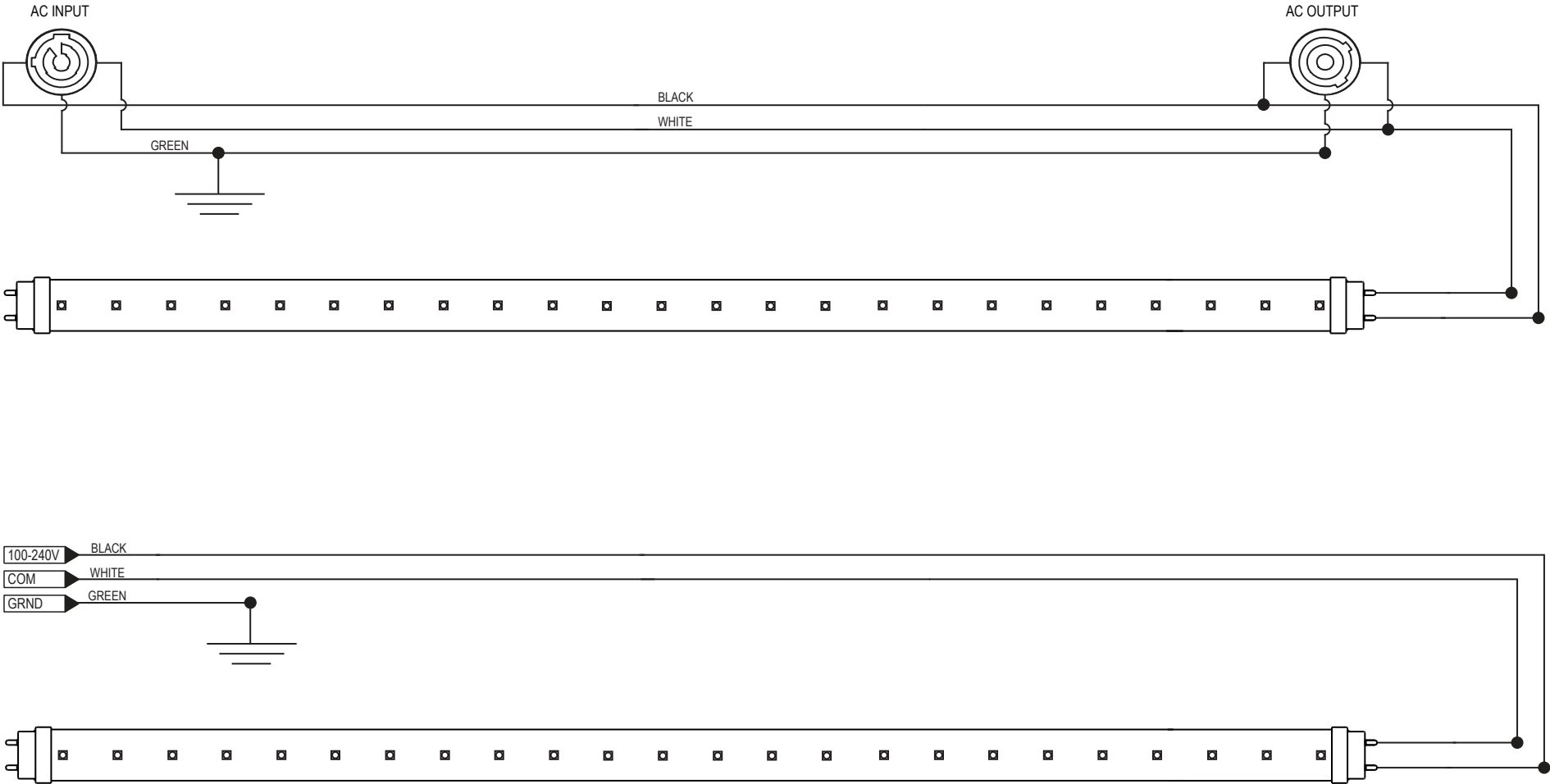
Schematic, UB-44-2



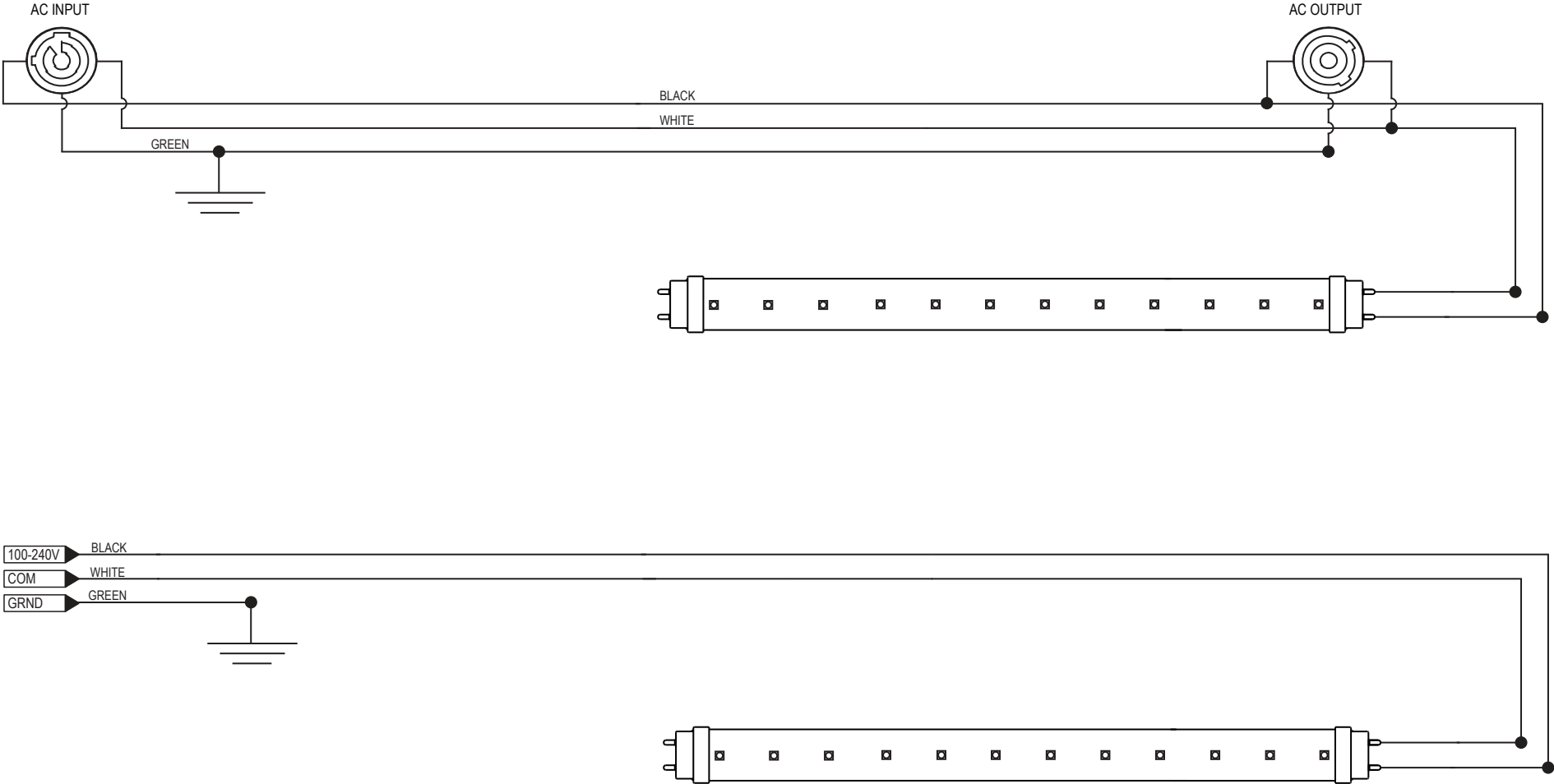
Schematic, UB-42-1 & UB-42-2



Schematic, UB-41-1 & UB-41-2



Schematic, UB-21-1 & UB-21-2



Wildfire Lighting Three Year Limited Warranty

Wildfire Lighting warrants to the original owner or retail customer, that for a period of three years from the date of delivery of any Wildfire Fixture; whether used in a portable or permanent installation, such fixtures will be free from defects in material and workmanship under normal use and conditions.

Warranty does not cover any product or part of a product that has been subjected to accident, negligence, alteration, abuse or misuse and excludes any accessories or parts not supplied by Wildfire. Warranty does not cover expendable parts such as fuses, lamps, glass or any components warranted directly to the owner by the original manufacturer. This warranty does not extend to products not manufactured by Wildfire.

Wildfire's responsibility under this warranty shall be to repair or replace at Wildfire's discretion such parts as determined to be defective upon Wildfire's inspection. Wildfire will not assume any responsibility for any labor expended or materials used to repair any equipment without Wildfire's prior written authorization.

Wildfire, Inc. shall not be responsible for any incidental, general or consequential damages to property, damage for loss of use, time profits or income, or any other charges.

The owners' obligation during the warranty period is to notify Wildfire of any suspected defect, to obtain a return authorization number, and to return the product freight and insurance prepaid to the following address:

**Wildfire Lighting 2908 Oregon Court Suite G1, Torrance, CA 90503
(800) 937-8065 (310) 755-6780**

Collect shipments for freight allowances or shipments without return authorization numbers will not be accepted.

THIS WARRANTY IS EXPRESSLY IN LIEU OF ANY AND ALL OTHER WARRANTIES EXPRESSED OR IMPLIED INCLUDING THE WARRANTIES OF MERCHANTABILITY AND FITNESS FOR A PARTICULAR PURPOSE AND ALL OTHER OBLIGATIONS AND LIABILITIES ON WILDFIRE'S PART. THERE ARE NO WARRANTIES WHICH EXTEND BEYOND THE DESCRIPTION ON THE FACE HEREOF. THE OWNER ACKNOWLEDGES THAT NO OTHER REPRESENTATIONS WERE MADE TO HIM WITH RESPECT TO THE QUALITY AND FUNCTION OF THE GOODS SOLD.

This written warranty is intended as a complete and exclusive statement of the terms thereof. Prior dealings or trade usage shall not be relevant to modify, explain or vary this warranty. Acceptance of, or acquiescing in, a course of performance under this warranty shall not modify the meaning of their agreement even though either party has knowledge of the performance and a chance to object.

This limited warranty gives you specific legal rights and you may also have other rights which vary from state to state. If any action or preceding results from this warranty, the prevailing party will be entitled to all costs and attorney fees incurred in defending or prosecuting such actions.



2908 Oregon Ct. Suite G1, Torrance, CA 90503
P: 310.755.6780 800.937.8065 F: 310.755.6781
wildfirelighting.com mail@wildfirelighting.com

© 2019 Wildfire, Inc.