

## Wildfire VioStorm VS-60 Trias Control Firmware Updating Instructions

The fixture's current firmware version is displayed on the home menu screen. See Fig.1

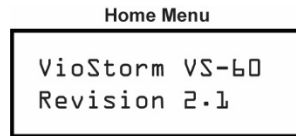


Fig. 1

To update the firmware, turn the fixture ON, select Confirm from the Program Update menu selection and press the UP button. The fixture will now be in Bootloader Mode waiting for the firmware update file. See Fig. 2

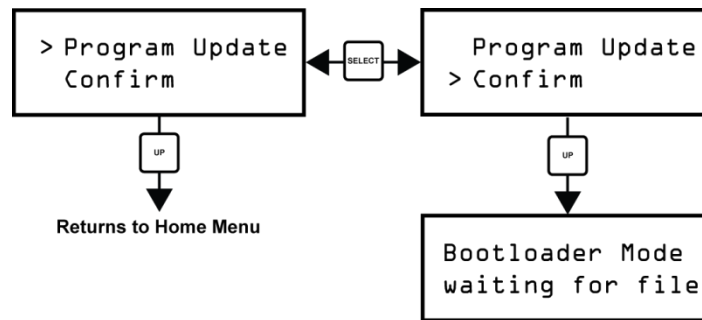


Fig. 2

Once the Bootloader Mode is invoked the fixture will turn the LED's off and wait for the firmware update. To exit the Bootloader Mode without installing the update, turn the fixture power switch OFF. To continue with the installation, connect the provided Mini B USB to Type A USB cable to the fixture and PC. The PC should recognize the fixture as a new USB device and install the appropriate drivers.

Open the Bootloader application (Wildfire\_USB\_Bootloader) on the computer which should now indicate that the fixture is connected in the lower right-hand corner of the screen. See Fig. 4

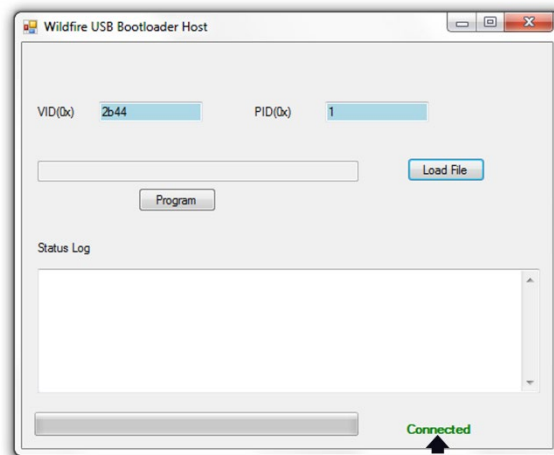


Fig. 4

Load the firmware update file into the Bootloader program by selecting the Load File button and choosing the firmware file to be loaded (VS60\_2\_1.cyacd) See Fig. 5

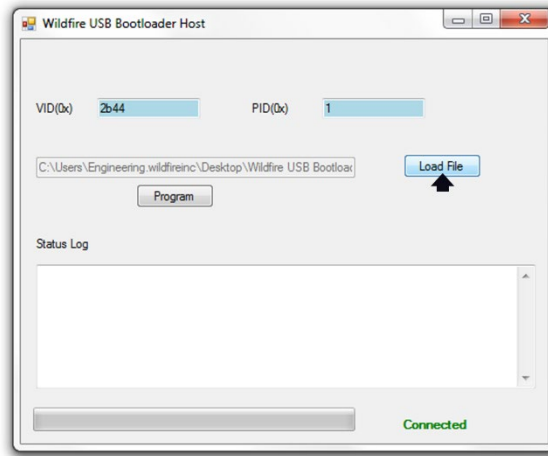


Fig. 5

Install the update onto the fixture by selecting the Program button in the Bootloader application. The status log will indicate that the update as started and a green bar at the bottom of the screen will show the install progress. See Fig. 6

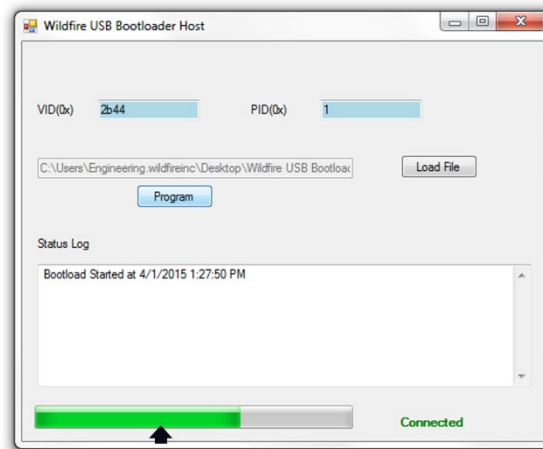


Fig. 6

Once the upload process has completed the status log will indicate that the update was successfully ended. The Bootloader application will also indicate that the fixture is now disconnected in the lower right-hand corner of the screen See Fig. 7 Close the Bootloader application.

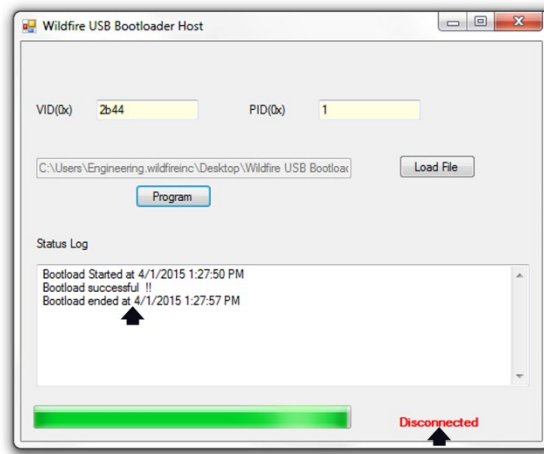


Fig. 7

Once the firmware installation is complete the fixture will resume its normal operation and the home menu will now display the new firmware version. See Fig. 8

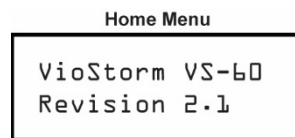


Fig. 8

New features and fixes in this version Include:

- Trias version 2.0 adds firmware control for optional onboard Multiverse® Wireless DMX/RDM and can only be loaded onto fixtures equipped with an internal control board that supports Multiverse® Wireless DMX/RDM.

VioStorm Series model VS-60 fixtures with serial numbers ending in 0265 and up have internal control boards which support Multiverse® Wireless DMX/RDM. VS-60 fixtures with serial numbers prior to this do not and must use firmware version 1.3

Additionally, for the Multiverse® Wireless DMX/RDM option to function this option must be factory installed on your fixture.

Multiverse is a registered trademark of City Theatrical, Carlstadt NJ